

Preliminary – Not For Construction

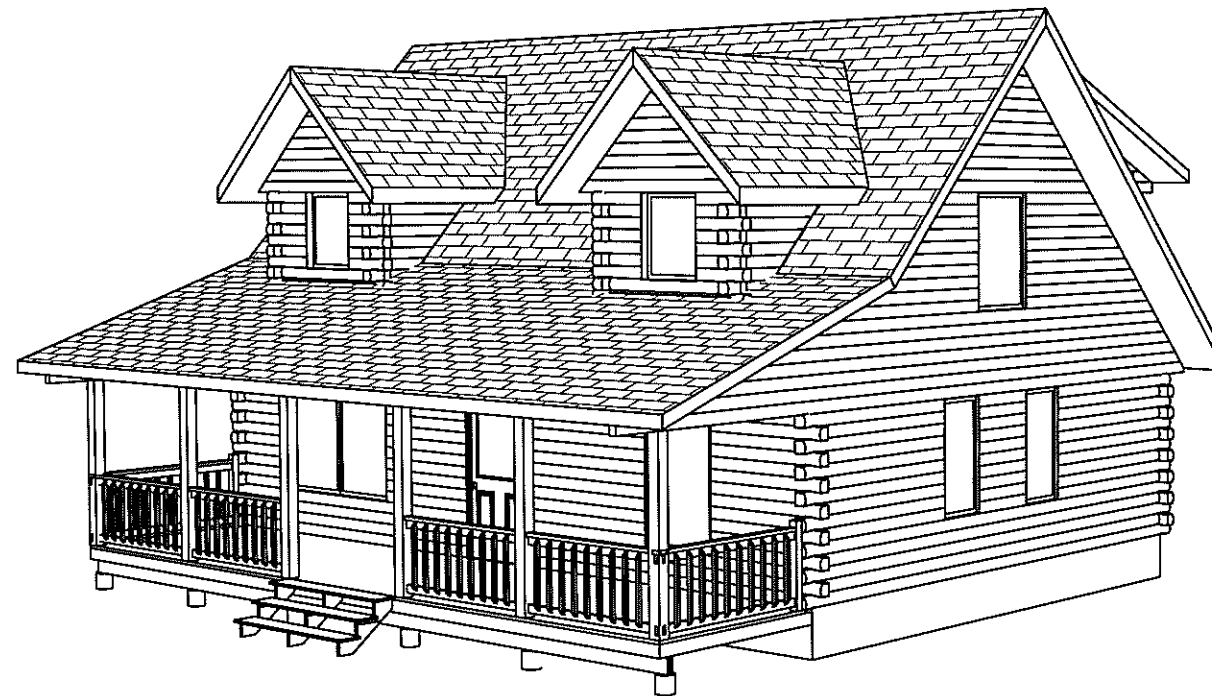
Riverbend Log Homes

A Division Of Phoenix Wood Products

79 Carleton Drive, Nackawic, N.B., E6G 1W2,

Tel: 1-800-561-3000, Fax: 506-575-2855

www.riverbendloghomes.com



Client: Homesteader With Dormers

Building Style: Homesteader With Dormers

Drawn By: JM

Project No.: 2011~

Revision No.: 0

Sheet List

- Cover Page
- A1 Elevations
- A2 3D View
- A3 3D View
- B2 First Floor Plan
- B3 Loft Floor Plan

*Notes:

*The following notes apply but are not limited to all pages of this document.

-The owner accepts full responsibility to ensure that all persons involved in the installation are trained and have adequate knowledge of construction practices in accordance with current Building Codes and Engineering Specifications.

-Proper care must be taken in Handling & Storage of materials.

-Riverbend Log Homes will not be held accountable for material shortages, lost time, damaged or stolen property due to improper installation or irresponsibility of the owner, contractor, or other persons involved.

-All foundation and subfloor materials are the responsibility of the owner. Structural Members including Foundation, Footings, Columns and Beams are to conform to local codes and approved by a Professional Engineer.

-Fireplace/Chimney size and location are to be specified by owner and noted on approval drawings.

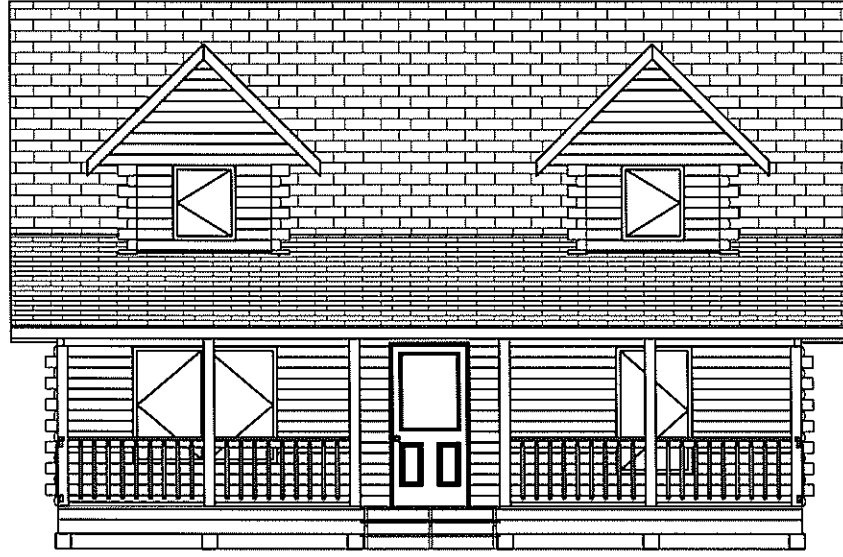
-Before applying stain, log surfaces must be sanded or washed with a mill-glaze removal solution. Contact Riverbend for a pamphlet on proper Log Home Preserving and Maintenance methods.

-Before starting construction, the builder/owner must review and be responsible for all details and dimensions, and ensure the plan conforms to all local building codes. Any errors or omissions to be reported to draftsman before construction.

-Riverbend Log Homes is obliged to consult on the construction of the components provided in the log home kit. Consultation on any other aspect such as foundation, will be a matter of opinion and not considered a Professional Service.

-Dimensions govern over scale.

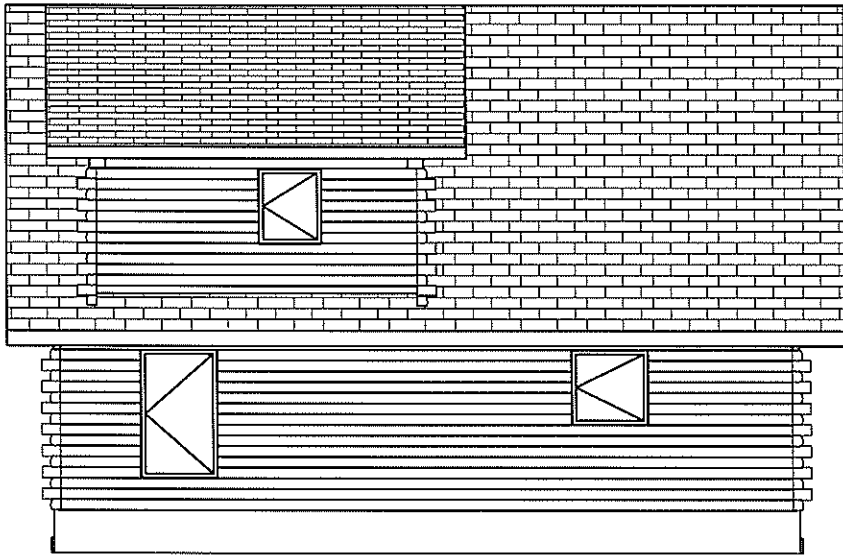
Preliminary – Not For Construction



Front Elevation



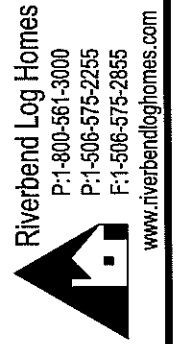
Right Elevation



Back Elevation



Left Elevation



Riverbend Log Homes
P:1-800-561-3000
P:1-506-575-2255
F:1-506-575-2855
www.riverbendloghomes.com

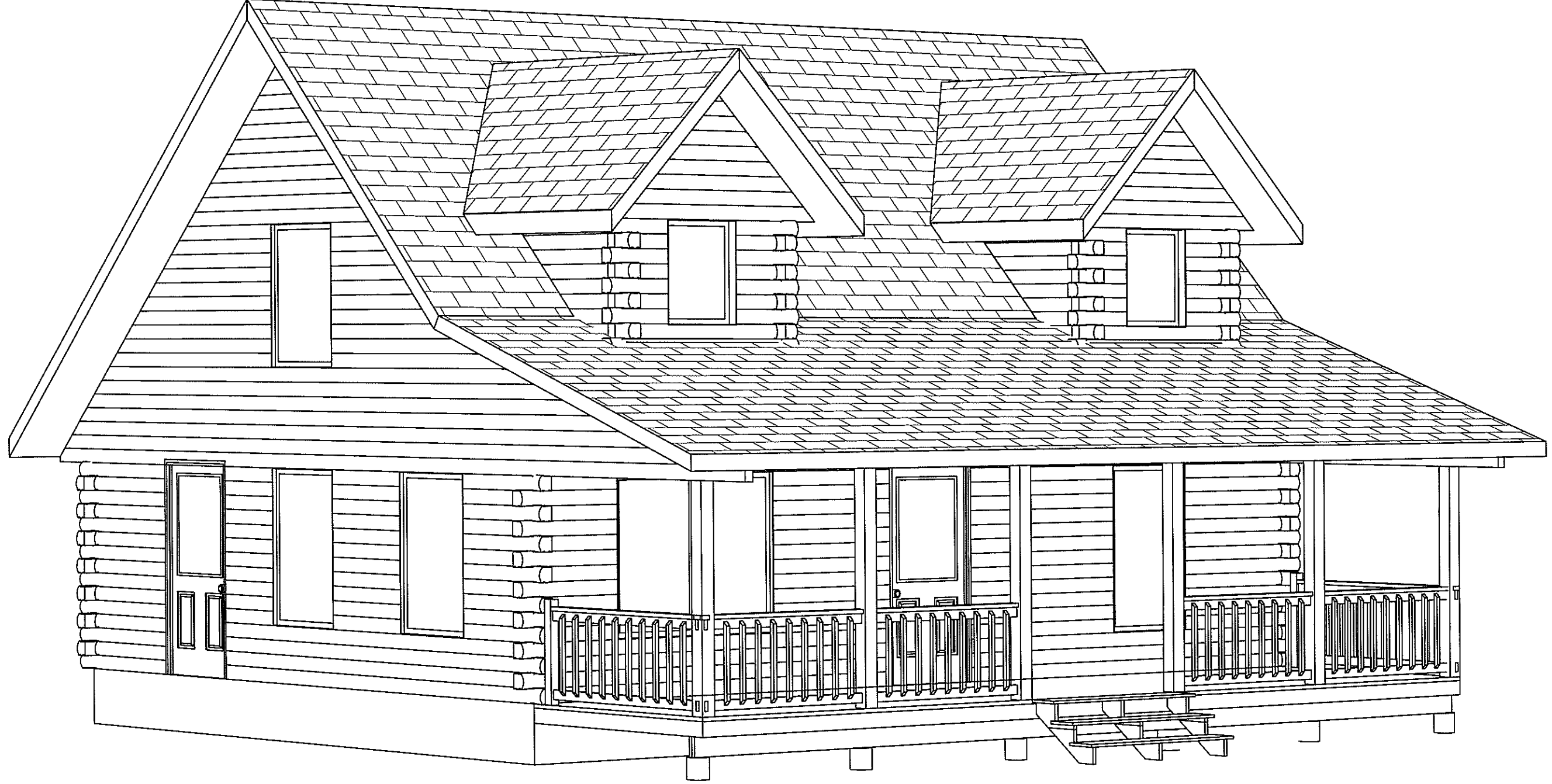
PROJECT NO: 2011~
DATE: Jan. 01, 2011
SHT SUBSET: 3D Reps & Elevs
DRAWN BY: JM
CHK'D BY: [REDACTED] REV. NO: 0
SCALE: $\frac{1}{8}'' = 1'-0''$

PROJECT NAME:
Homesteader With Dormers
BLDG. STYLE:
Homesteader With Dormers

SHEET TITLE:
Elevations

SHEET NO:
A1

Preliminary – Not For Construction



SHEET NO:
A2

SHEET TITLE:
3D View

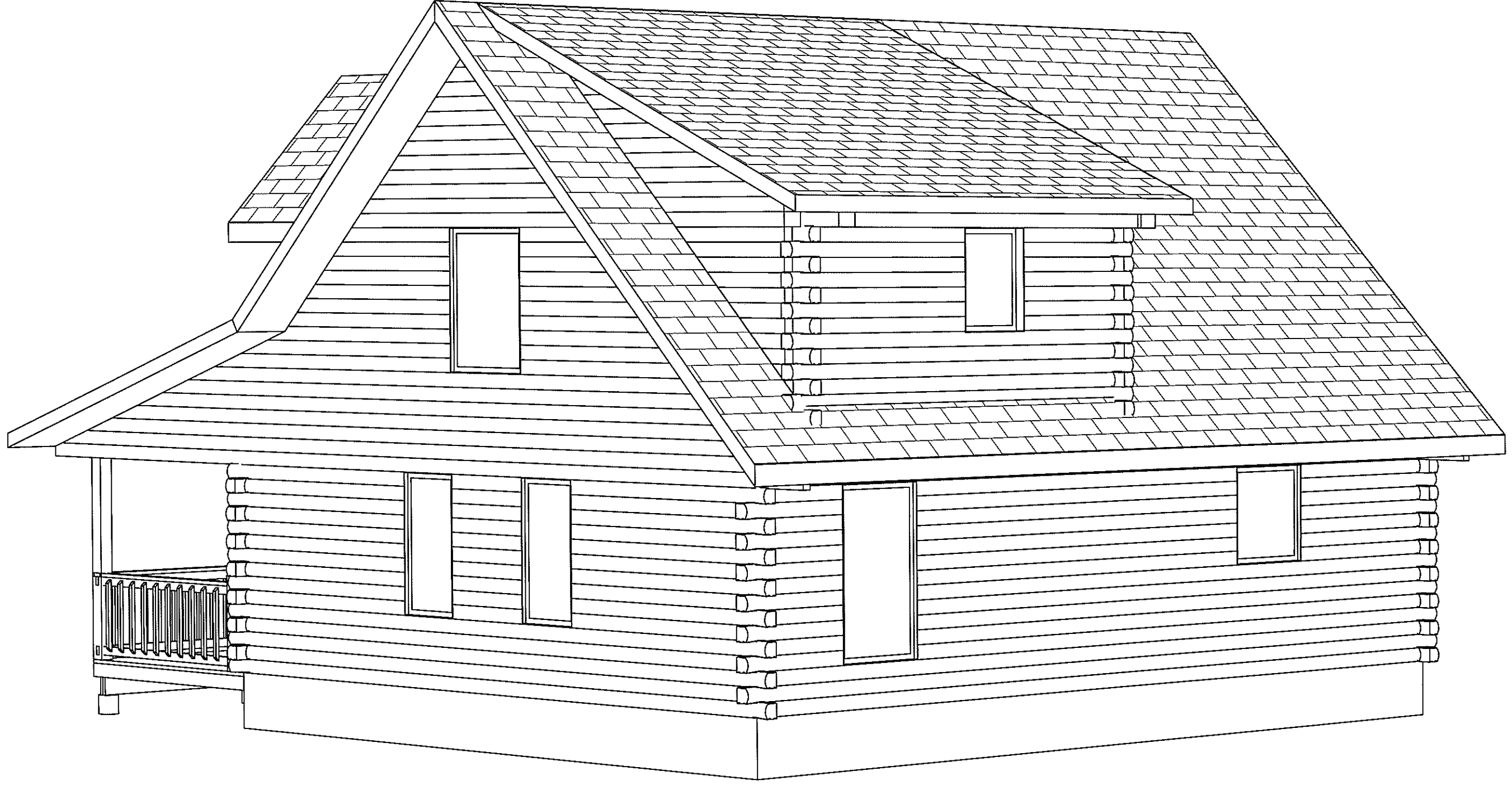
PROJECT NAME:
Homesteader With Dormers
BLDG. STYLE:
Homesteader With Dormers

Riverbend Log Homes
P: 1-800-561-3000
P: 1-506-575-2255
F: 1-506-575-2855
www.riverbendloghomes.com



PROJECT NO.: 2011~
DATE: Jan. 01, 2011
SHT SUBSET: 3D Reps & Elevs
DRAWN BY: JM
CHK'D BY: [REDACTED]
SCALE: N.T.S.
REV. NO.: 0

Preliminary – Not For Construction



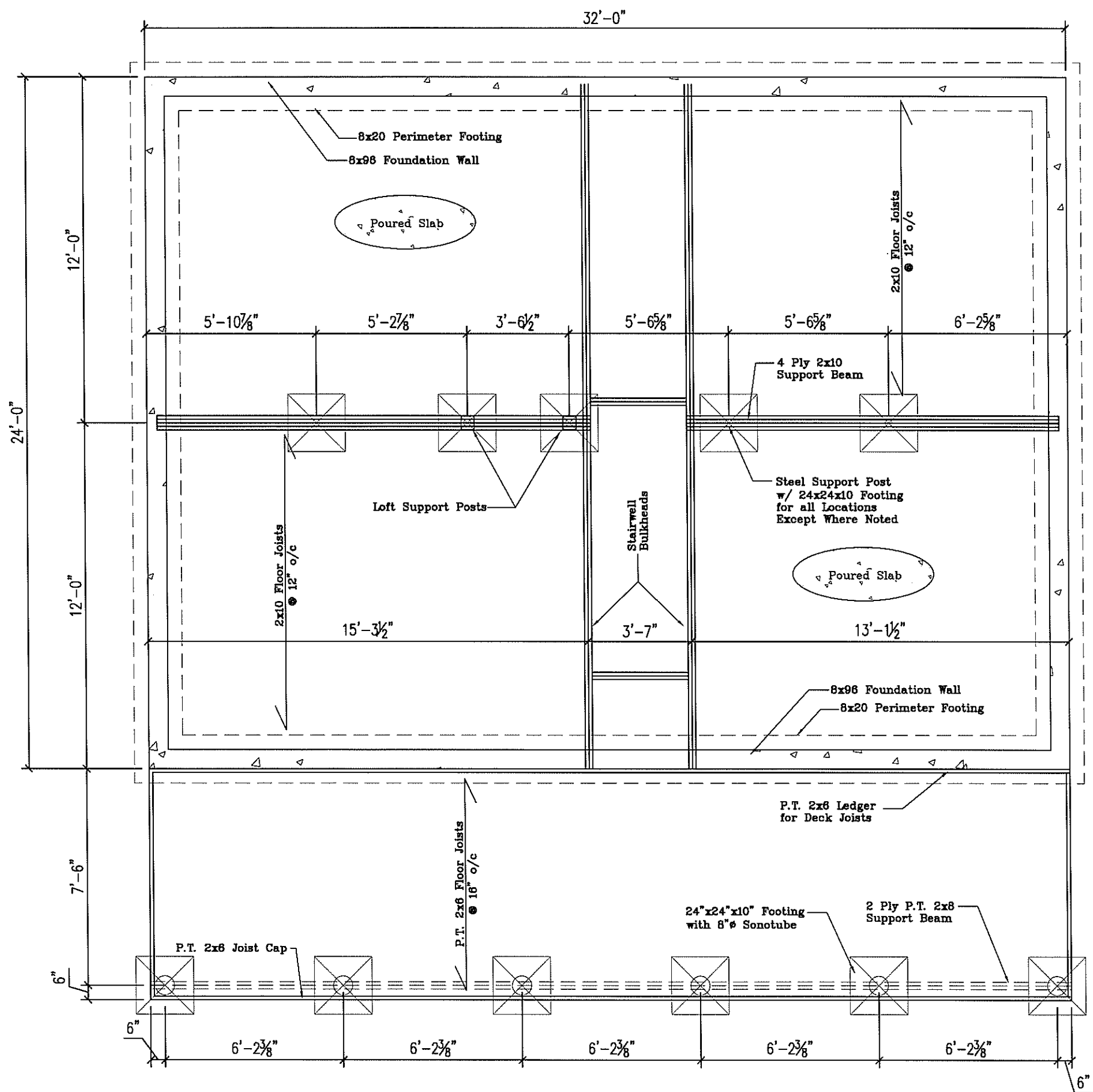
PROJECT NO: 2011~
DATE: Jan. 01, 2011
SHT SUBSET: 3D Reqs & Elevs
DRAWN BY: JM
CHK'D BY: |REV. NO: 0
SCALE: N.T.S.

 Riverbend Log Homes
P: 1-800-561-3000
P: 1-506-575-2255
F: 1-506-575-2855
www.riverbendloghomes.com

PROJECT NAME:
Homesteader With Dormers
BLDG. STYLE:
Homesteader With Dormers

SHEET TITLE:
3D View

SHEET NO:
A3



SHEET NO:
B1

SHEET TITLE:
Foundation Plan

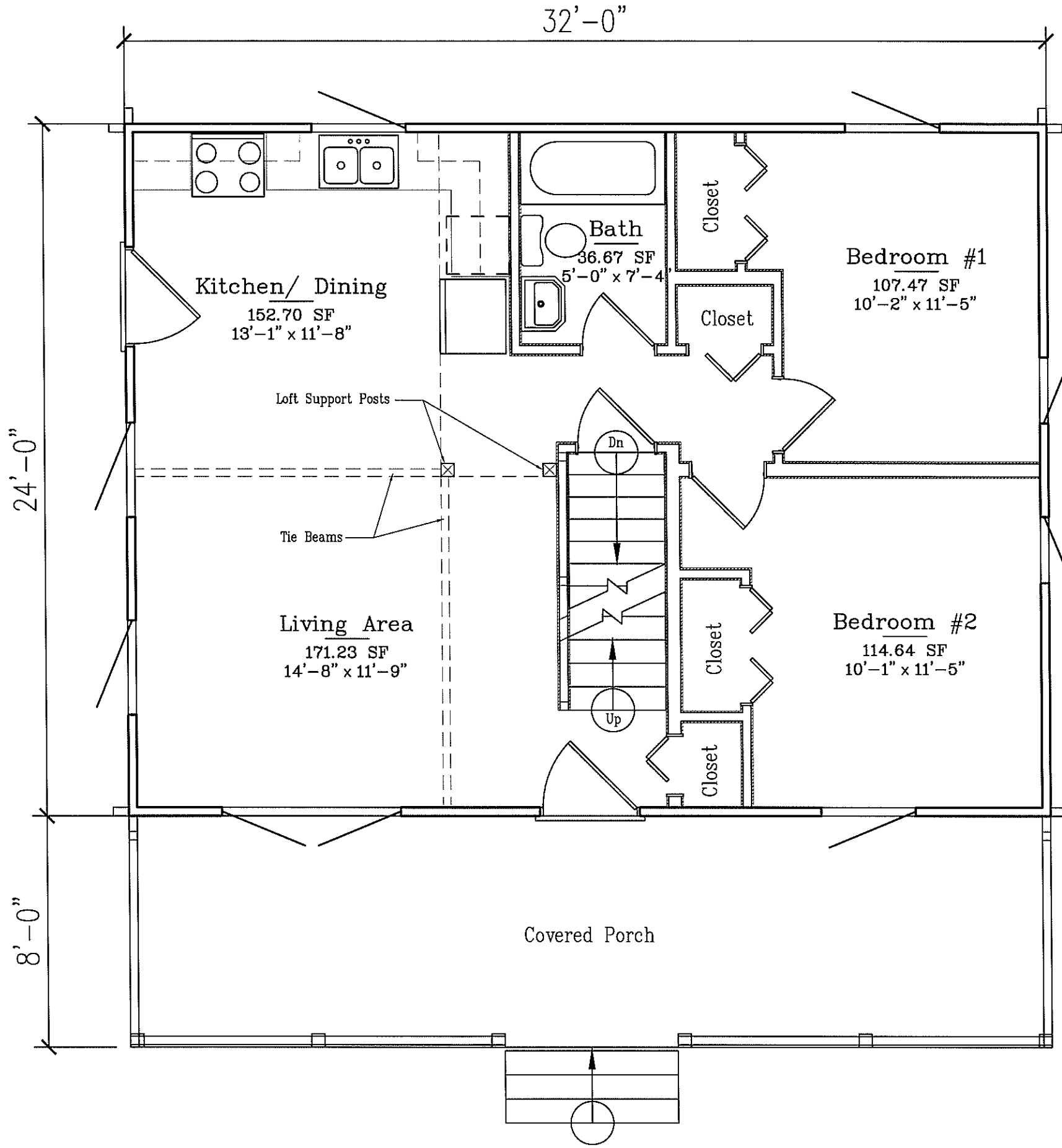
PROJECT NAME:
Homesteader


BLDG. STYLE:
Standard Homesteader

Riverbend Log Homes
 P: 1-800-561-3000
 P: 1-506-575-2255
 F: 1-506-575-2855
www.riverbendloghomes.com

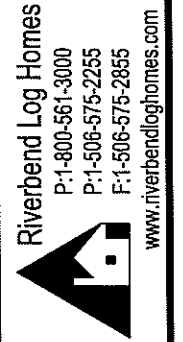
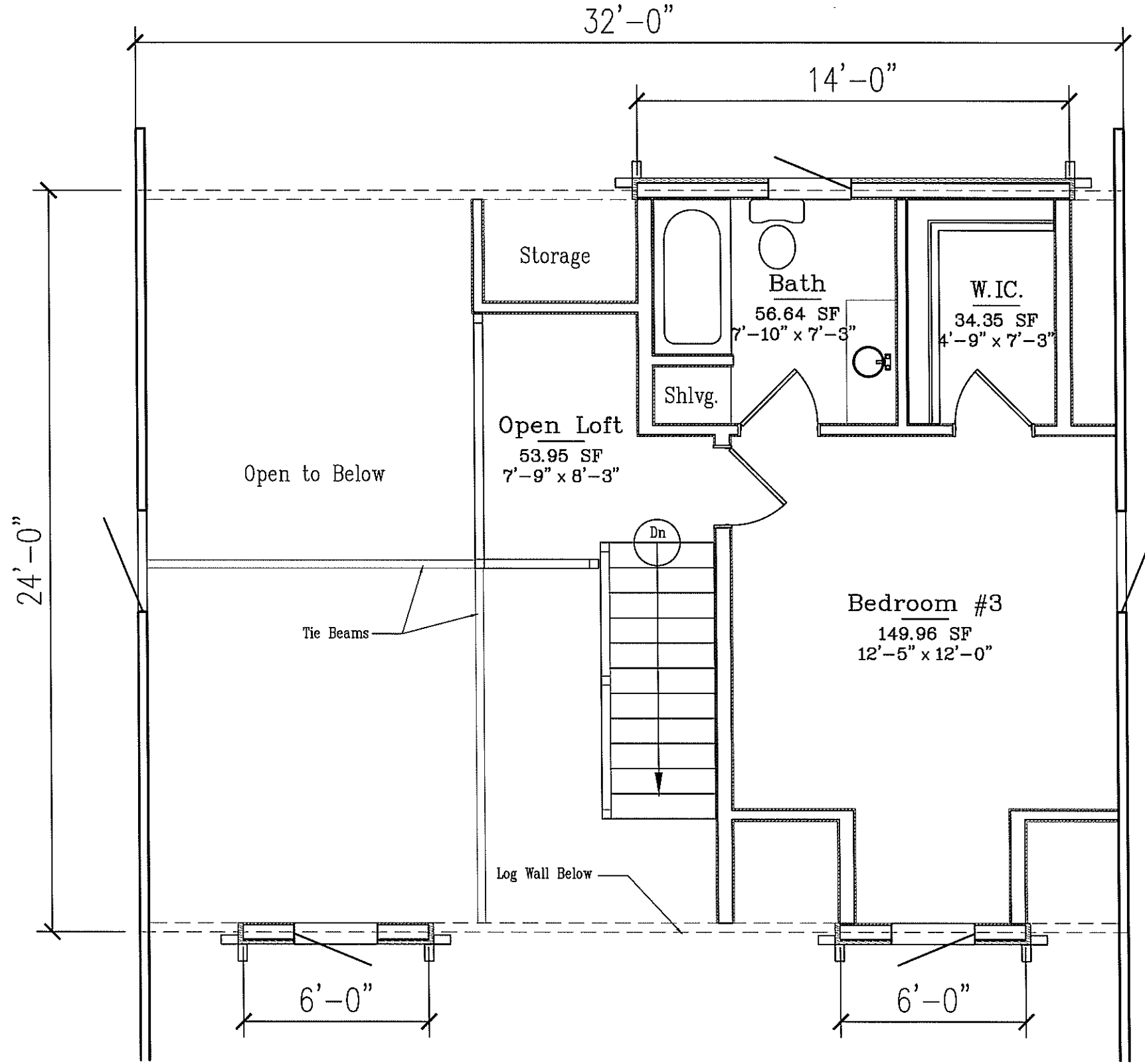
PROJECT NO: 2006~
 DATE: January 11, 2016
 SHT SUBSET: Plans
 DRAWN BY: JF
 CHK'D BY: [REDACTED]
 REV. NO: 0
 SCALE: N.T.S.

Preliminary – Not For Construction



PROJECT NO: 2011~	PROJECT NAME: Homesteader With Dormers	SHEET NO: B2
DATE: Jan. 01, 2011	BLDG. STYLE: Homesteader With Dormers	SHEET TITLE: First Floor Plan
SHT SUBSET: Plans		
DRAWN BY: JM		
CHK'D BY:		
SCALE: 1/4" = 1'-0"		
REV. NO: 0		
 Riverbend Log Homes P: 1-800-561-3000 F: 1-506-575-2255 F: 1-506-575-2855 www.riverbendloghomes.com		

Preliminary – Not For Construction



Riverbend Log Homes
 P: 1-800-561-3000
 P: 1-506-575-2255
 F: 1-506-575-2855
 www.riverbendloghomes.com

PROJECT NO: 2011~
 DATE: Jan. 01, 2011
 SHT SUBSET: Plans
 DRAWN BY: JM
 CHK'D BY: _____
 REV. NO: 0
 SCALE: 1/4" = 1'-0"

PROJECT NAME: Homesteader With Dormers
 BLDG. STYLE: Homesteader With Dormers

SHEET TITLE: Loft Floor Plan

SHEET NO: B3