

\*Preliminary – Not for Construction\*



# Riverbend Log Homes

79 Carleton Drive, Nackawic, N.B., E6G 1W2,

Tel: 1-800-561-3000, Fax: 506-575-2855

[www.riverbendloghomes.com](http://www.riverbendloghomes.com)

Client: Islander

Building Style: Standard Islander

Drawn By: RM

Project No.: 2006~

Revision No.: 0

## Sheet List

--	Cover Page
A1	Elevations
A2	3D View
A3	3D View
B2	First Floor Plan
B3	Loft Floor Plan

## \*Notes:

\*The following notes apply but are not limited to all pages of this document.

–The owner accepts full responsibility to ensure that all persons involved in the installation are trained and have adequate knowledge of construction practices in accordance with current Building Codes and Engineering Specifications.

–Proper care must be taken in Handling & Storage of materials.

–Riverbend Log Homes will not be held accountable for material shortages, lost time, damaged or stolen property due to improper installation or irresponsibility of the owner, contractor, or other persons involved.

–All foundation and subfloor materials are the responsibility of the owner. Structural Members including Foundation, Footings, Columns and Beams are to conform to local codes and approved by a Professional Engineer.

–Fireplace/Chimney size and location are to be specified by owner and noted on approval drawings.

–Before applying stain, log surfaces must be sanded or washed with a mill-glaze removal solution. Contact Riverbend for a pamphlet on proper Log Home Preserving and Maintenance methods.

–Before starting construction, the builder/owner must review and be responsible for all details and dimensions, and ensure the plan conforms to all local building codes. Any errors or omissions to be reported to draftsman before construction.

–Riverbend Log Homes is obliged to consult on the construction of the components provided in the log home kit. Consultation on any other aspect such as foundation, will be a matter of opinion and not considered a Professional Service.

–Dimensions govern over scale.

\*Preliminary – Not for Construction\*



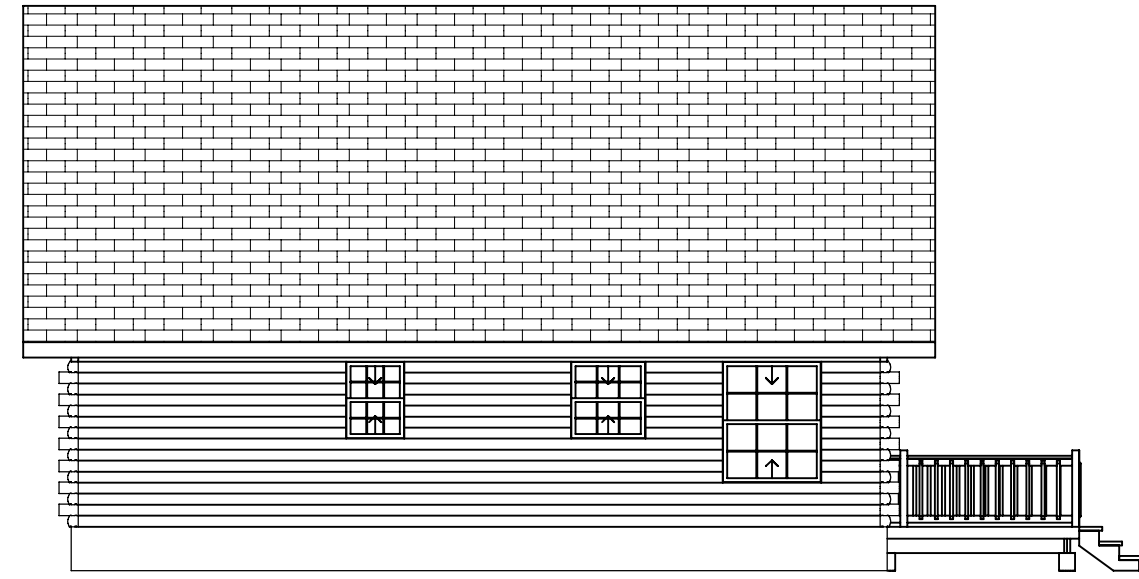
Front Elevation



Right Elevation



Back Elevation



Left Elevation

SHEET NO:

A1

SHEET TITLE:  
Elevations

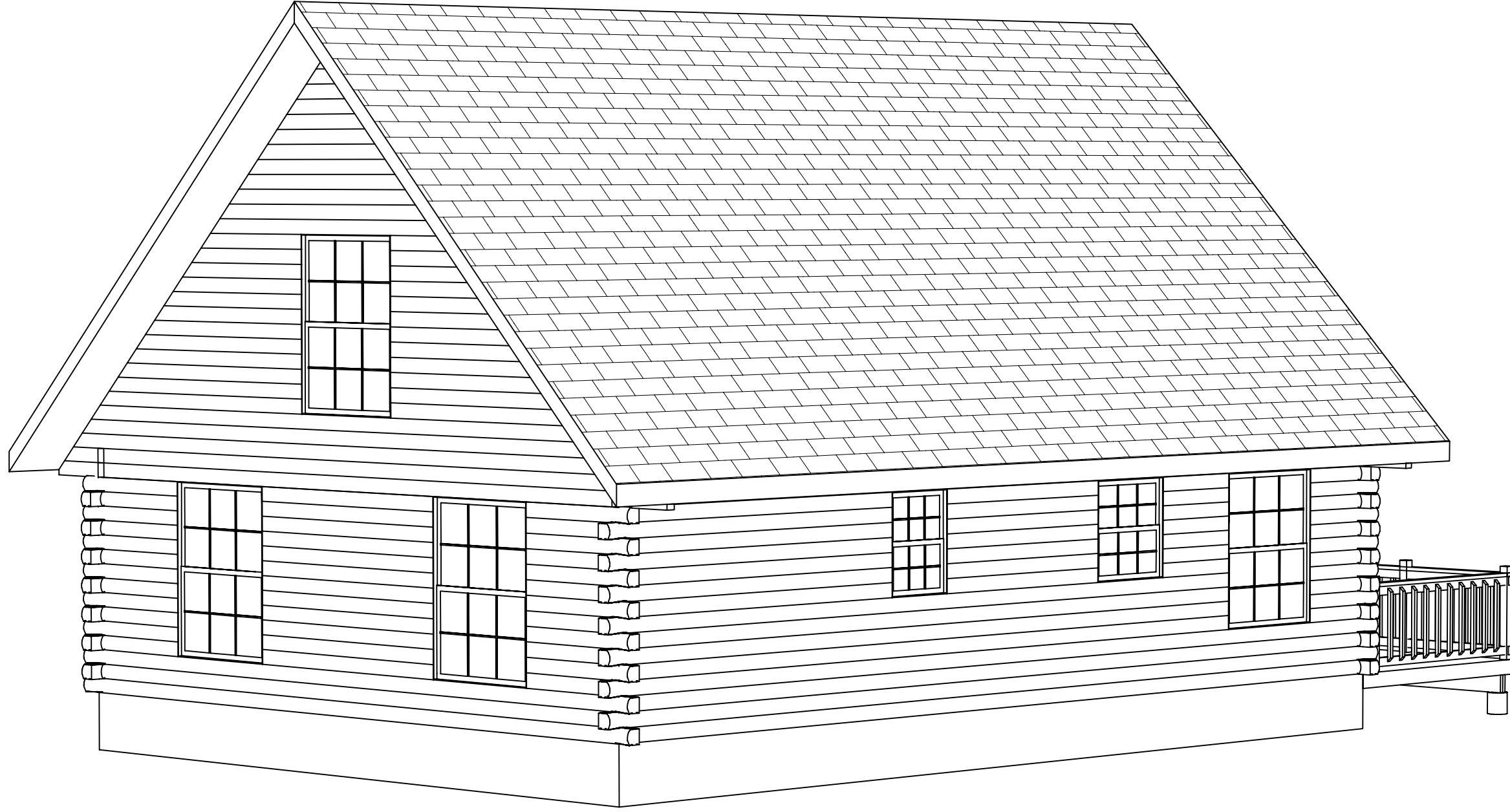
PROJECT NAME:  
Islander

BLDG. STYLE:  
Standard Islander

Riverbend Log Homes  
P: 1-800-561-3000  
P: 1-506-575-2255  
F: 1-506-575-2855  
www.riverbendloghomes.com

PROJECT NO: 2006~  
DATE: Sept. 16, 2005  
SHT SUBSET: 3D Reqs & Elevs  
DRAWN BY: RM  
CHK'D BY: REV. NO: 0  
SCALE: 1/8" = 1'-0"

\*Preliminary – Not for Construction\*



PROJECT NO: 2006~  
DATE: Sept. 16, 2005  
SHT SUBSET: 3D Reqs & Elevs  
DRAWN BY: RM  
CHK'D BY: |REV. NO: 0  
SCALE: N.T.S.

Riverbend Log Homes  
P:1-800-561-3000  
P:1-506-575-2255  
F:1-506-575-2855  
www.riverbendloghomes.com

PROJECT NAME: Islander  
BLDG. STYLE: Standard Islander

SHEET TITLE: 3D View

SHEET NO: A2

\*Preliminary – Not for Construction\*



PROJECT NO: 2006~  
DATE: Sept. 16, 2005  
SHT SUBSET: 3D Reps & Elevs  
DRAWN BY: RM  
CHK'D BY: |REV. NO: 0  
SCALE: N.T.S.

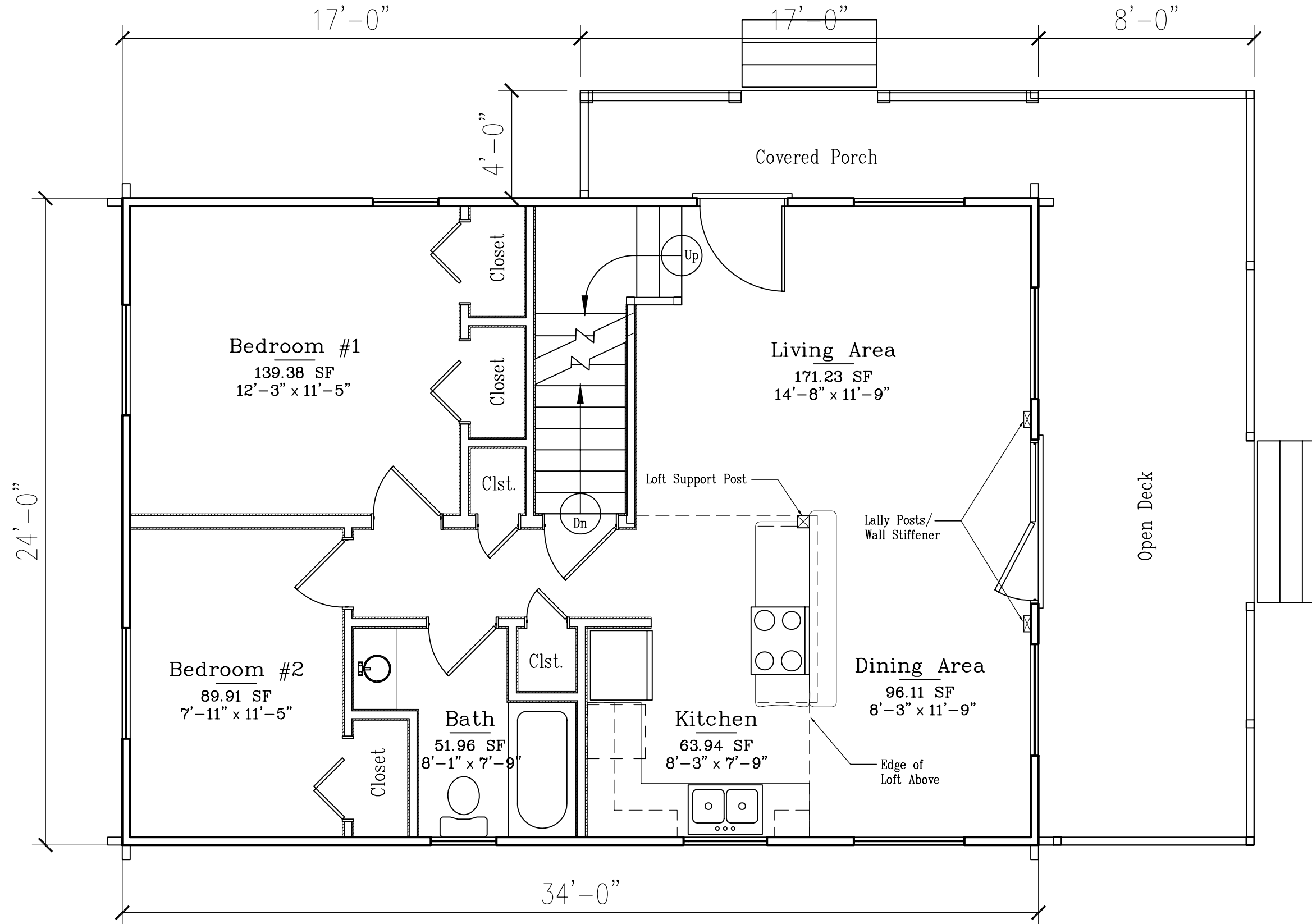
Riverbend Log Homes  
P:1-800-561-3000  
P:1-506-575-2255  
F:1-506-575-2855  
www.riverbendloghomes.com

PROJECT NAME: Islander  
BLDG. STYLE: Standard Islander

SHEET TITLE: 3D View

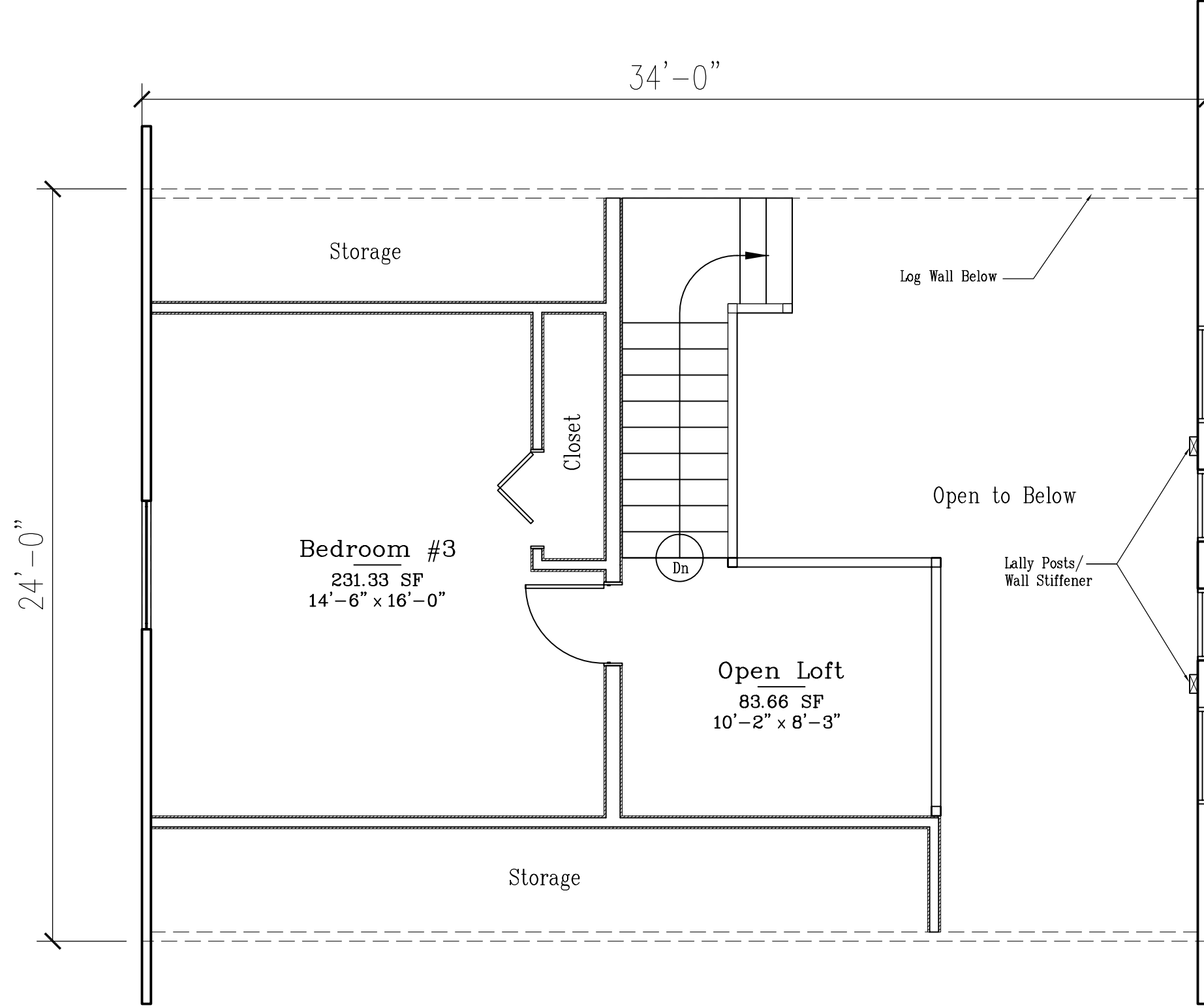
SHEET NO: A3

\*Preliminary – Not for Construction\*



PROJECT NO: 2006~	PROJECT NAME: Islander	SHEET NO: B2
DATE: Sept. 16, 2005	BLDG. STYLE: Standard Islander	
SHT SUBSET: Plans		
DRAWN BY: RM		
CHK'D BY:		
REV. NO: 0		
SCALE: 1/4" = 1'-0"		
Riverbend Log Homes P: 1-800-561-3000 P: 1-506-575-2255 F: 1-506-575-2855 www.riverbendloghomes.com		

\*Preliminary — Not for Construction\*



PROJECT NO: 2006~  
DATE: Sept. 16, 2005  
SHT SUBSET: Plans  
DRAWN BY: RM  
CHK'D BY: |REV. NO: 0  
SCALE: 1/4" = 1'-0"

Riverbend Log Homes  
P: 1-800-561-3000  
P: 1-506-575-2255  
F: 1-506-575-2855  
www.riverbendloghomes.com

PROJECT NAME: Islander  
BLDG. STYLE: Standard Islander

SHEET TITLE: Loft Floor Plan

SHEET NO: B3